

# Delaware is host to 120 species of butterflies.

Half of these are moth-like “skippers.”

Most are found sipping flower nectar. A few prefer tree sap or rotting fruit.

As caterpillars, their diet is more restricted: they can only survive by feeding on specific “host” plants on which female butterflies lay their eggs.

During the winter, Delaware’s butterflies:

- migrate to warmer climates
- hibernate here
- await spring in a chrysalis or caterpillar form

Butterflies and other pollinators play an essential role in the health of our environment and food supplies.

All of these butterflies suffer the effects of climate change and habitat loss.

Compiled by Suzanne Herel  
Photography by Suzanne Herel,  
Joe Sebastiani, Ian Stewart, Derek Stoner,  
and Kenneth Dwain Harrelson



Gray Hairstreak  
*Strymon melinus*



Banded Hairstreak  
*Satyrium calanus*



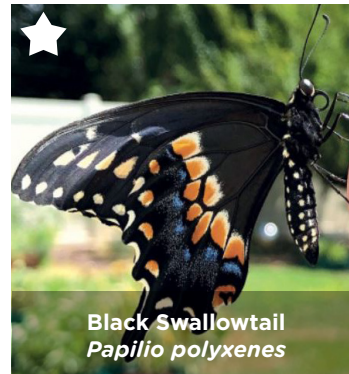
Red-banded Hairstreak  
*Calycopis cecrops*



Red-spotted Purple  
*Basilarchia artheis Astyanax*



Pipevine Swallowtail  
*Battus philenor*



Black Swallowtail  
*Papilio polyxenes*



Spicebush Swallowtail  
*Papilio Troilus*



Tiger Swallowtail  
*Papilio glaucus*

# Butterflies — OF ASHLAND —



## Identification Guide

Identify butterflies commonly found at  
Ashland Nature Center  
in Hockessin, Delaware





Cabbage White  
*Peris rapae*



Summer Azure  
*Celastrina neglecta*



Eastern Tailed Blue  
*Cupido comyntas*



Cloudless Sulphur  
*Phoebis sennae eubule*



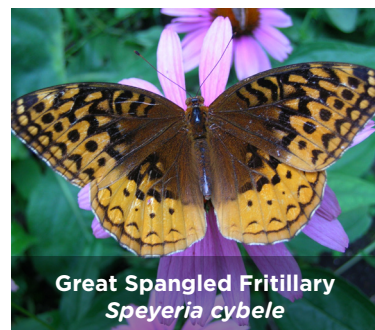
Orange Sulphur  
*Colias eurytheme*



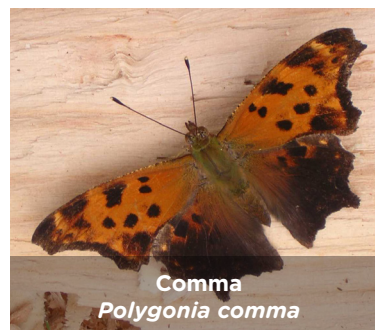
Silver-spotted Skipper  
*Epargyreus clarus*



Variegated Fritillary  
*Euptoieta Claudia*



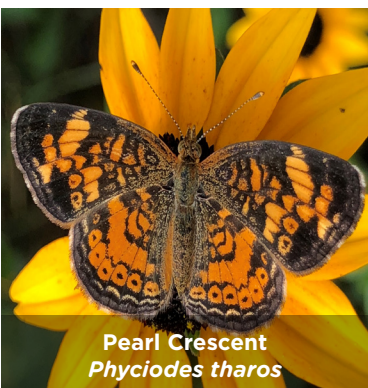
Great Spangled Fritillary  
*Speyeria cybele*



Comma  
*Polygonia comma*



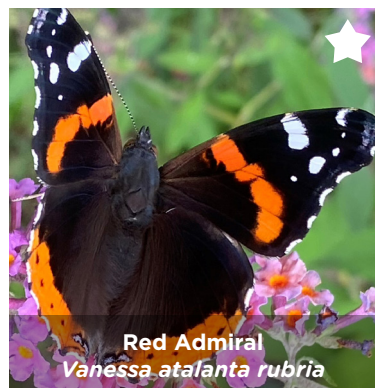
Question Mark  
*Polygonia interrogationis*



Pearl Crescent  
*Phyciodes tharos*



Common Buckeye  
*Junonia coenia*



Red Admiral  
*Vanessa atalanta rubria*



Viceroy  
*Basilarchia Archippus*



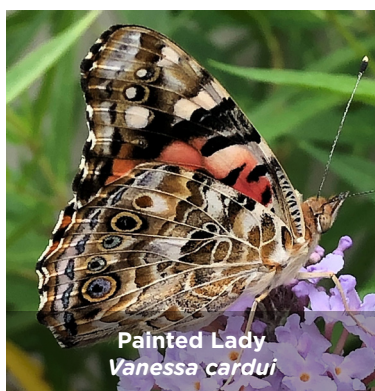
Monarch  
*Danaus plexippus*



Mourning Cloak  
*Nymphalis antipoa*



American Lady  
*Vanessa virginiensis*



Painted Lady  
*Vanessa cardui*



Discover more  
about the starred ★ species  
and learn how DelNature is helping  
butterflies and pollinators.

[DELNATURE.ORG/BUTTERFLY](https://delnature.org/butterfly)