



DELAWARE NATURE SOCIETY

Spring 2011 Tree Planting at Middle Run Natural Area

Saturday, April 2, 9:00am to Noon

Instructions:

- Please dress for the weather and wear long pants, gloves and sturdy shoes.
- Please bring a shovel and a gallon milk jug full of water for the first tree.
- Planting instructions and refreshments will be provided.
- Have a fun time making a positive contribution to our local environment!

IMPORTANT! If you or your group is planning to attend either session, you must register beforehand. Please contact Derek Stoner, Reforestation Coordinator, at (302) 239-2334 ext. 106, or email derek@delawarenaturesociety.org

Location: Middle Run Natural Area, north of Newark, Delaware

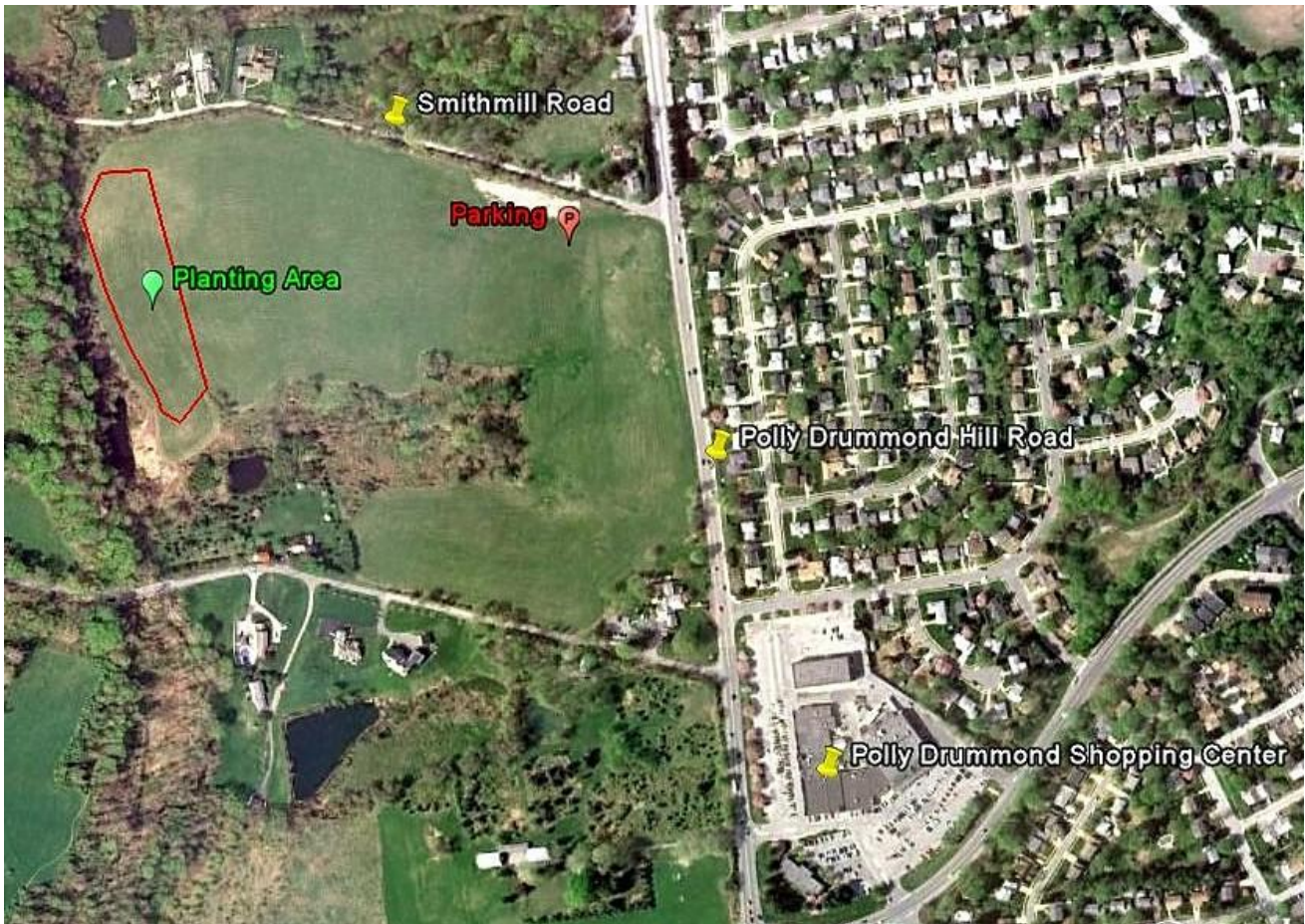
New Planting Location— Smith Mill Road, off of Polly Drummond Road.
(1/4 mile north of Polly Drummond Shopping Center)

Look for Tree Planting signs.

About the Middle Run Reforestation Project

SINCE 1992, THOUSANDS OF VOLUNTEERS HAVE PLANTED MORE THAN 38,000 TREES AND SHRUBS and 20,000 tree seeds on 70 acres of abandoned farm fields in New Castle County's 850-acre Middle Run Natural Area. Coordinated by the Delaware Nature Society, this pioneer project helps accelerate hardwood forest succession in Delaware's piedmont, increasing the forest interior habitat and the forested buffer along Middle Run. A tributary of White Clay Creek, the protection of the Middle Run watershed is important to ensure high quality water for City of Newark.

Map and Directions:



From Paper Mill Road(Route 72):

Turn onto Polly Drummond Hill Road and travel 1.4 miles to Smithmill Road. Turn right onto Smithmill and make an immediate left into the designated parking area.

From Kirkwood Highway(Route 2):

Turn onto Polly Drummond Hill Road and travel 1.8 miles to Smithmill Road. Turn left onto Smithmill and make an immediate left into the designated parking area.

GPS Coordinates: Latitude: 39°43'15.34" N Longitude: 75°42'45.23" W